

ROCK IGUANAS

by Elaine A. Powers

Illustrated by Anderson Atlas

Several of the islands in the Caribbean Sea, known as the West Indies, have native iguanas.

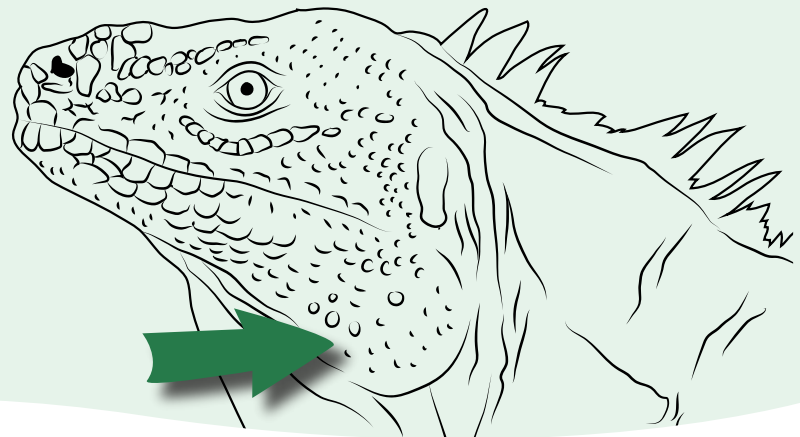
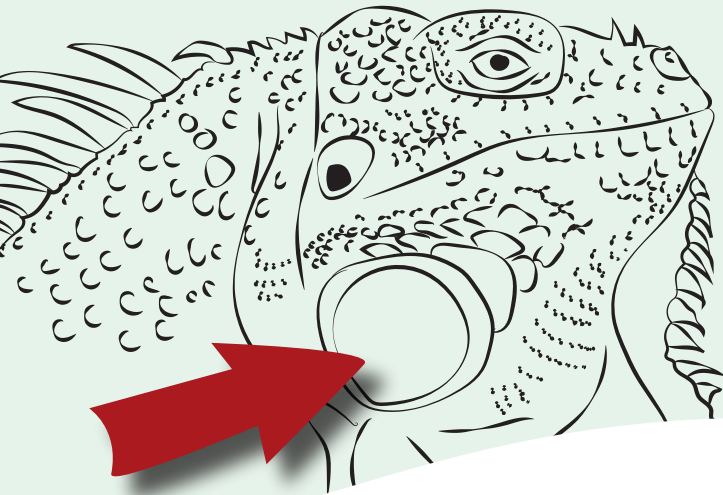
They are called
Rock Iguanas



Green Iguanas have been introduced on these islands and are a threat to the Rock Iguanas. They compete for food, territory and nesting areas. When you see an iguana ask: What kind do I see? What species is that iguana in front of me? Is it an **invasive Green** or a Rock, one of our own?



How to tell the difference between Native and the Invasive **Green Iguana**

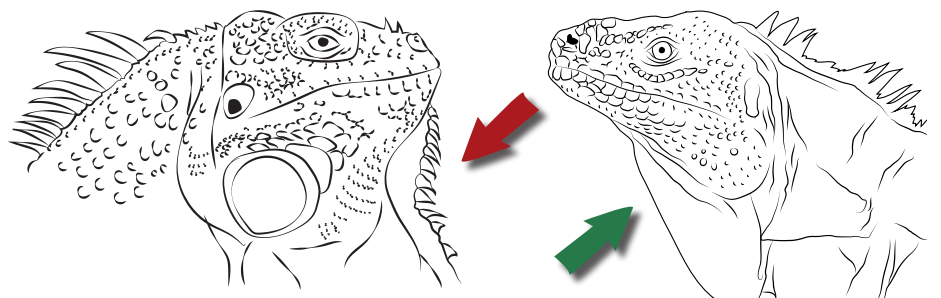


Subtympanic (below the ear) or large face scale= **Non-Native**

This is a characteristic of the **Green Iguana** only. Do you see a big face scale, as round as can be? It's below the ear, that's where it will be. Then it's an invasive **Green**, get rid of it now. The local authorities will tell you how.

We see another difference below the chin.

Greens' have dewlap points or spines built-in, While native Rocks' dewlaps have smooth skin. Points under the chin? It's a **Green** trying to move in.



You've looked at the head, now look at the tail.
 The differences are clear there as well.
Greens have distinct tail stripes as you can see.
 While Natives' tails have more variety.

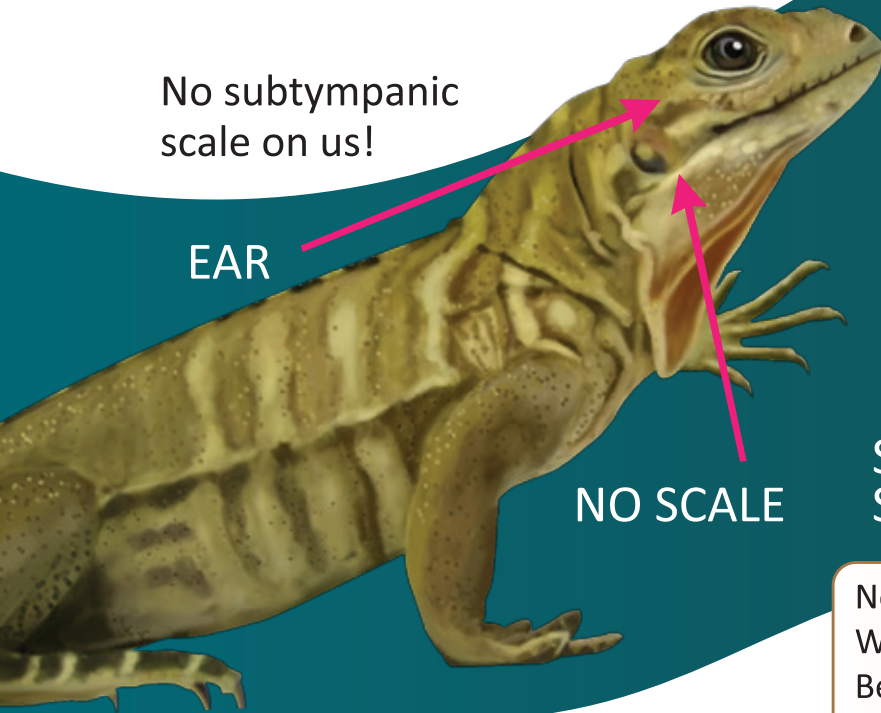


There's more to see when you look at the tail.
 The difference is clear there, too – no fibbing
 Every **Green iguana** has a smooth, striped tail,
 While Rock iguanas' tails have ridges or ribbing.

No subtympnic
 scale on us!

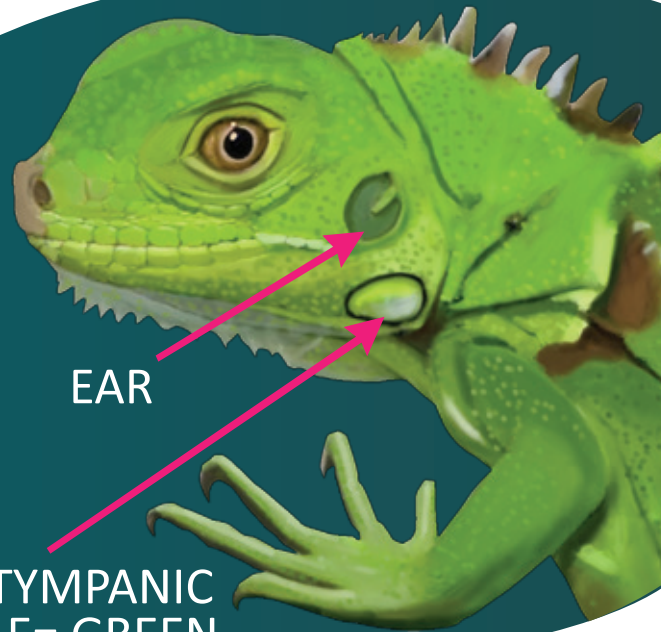
EAR

NO SCALE



EAR

SUBTYMPNIC
 SCALE= GREEN



Protect Iguanas

Dogs and cats are great hunters, as we all know.
 Did no one realize how many iguanas would go?
 Remember to keep your dog on a leash,
 Or more lives of native iguanas will cease.
 Remember to keep your cats indoors.
 Do not let them outside to explore.
 Dogs and cats were introduced by men.
 That they're predators is beyond the iguanas' ken.
 Dogs kill adult natives and cats kill the babies.
 Rock Iguanas should be safe, don't you agree?

Now you know
 Who should stay and who should go.
 Be a friend to Rock Iguanas.
 See a **Green Iguana**? Report what you know.

Acknowledgments: Pamela Bickell, TAZA2, John Binns, Bonnie Scott Edwards, Jill Jollay, Bahamas National Trust, Cayman Islands National Trust and Cayman Islands Department of the Environment.



Produced by
 Lyric Power Publishing, LLC
 Copyright 2016