

CAYMAN ISLANDS



National Conservation Act, 2013

(Act 24 of 2013)

NATIONAL CONSERVATION (MARINE PARKS) REGULATIONS, 2021

(SL 19 of 2021)

Supplement No. 1 published with Legislation Gazette No. 21 dated 12th March, 2021.

PUBLISHING DETAILS



CAYMAN ISLANDS**National Conservation Act, 2013****(Act 24 of 2013)****NATIONAL CONSERVATION (MARINE PARKS)
REGULATIONS, 2021****(SL 19 of 2021)****Arrangement of Regulations**

Regulation	Page
1. Citation	5
2. Definitions	5
3. Marine Parks	6
4. Categories of marine parks	6
5. Marine reserve zones	6
6. Environmental zones	7
7. Wildlife interaction zones	7
8. Line fishing zones	8
9. Shore line fishing zone	9
10. No-diving overlay zone	9
11. Spawning aggregation overlay zone	10
12. Emergency anchoring	10
13. Designation of zones	10
14. Repeal of the Marine Conservation (Marine Parks) Regulations (2007 Revision), Marine Conservation Regulations (2004 Revision) and Restricted Marine Areas (Designation) Regulations (2004 Revision)	10
SCHEDULE 1	11
MARINE RESERVE ZONES	11
SCHEDULE 2	19
ENVIRONMENTAL ZONES	19



SCHEDULE 3	21
WILDLIFE INTERACTION ZONES	21
SCHEDULE 4	23
LINE FISHING ZONES	23
SCHEDULE 5	29
SHORE LINE FISHING ZONES	29
SCHEDULE 6	31
NO-DIVING OVERLAY ZONES	31
SCHEDULE 7	37
SPAWNING AGGREGATION OVERLAY ZONES	37



CAYMAN ISLANDS



National Conservation Act, 2013

(Act 24 of 2013)

NATIONAL CONSERVATION (MARINE PARKS)
REGULATIONS, 2021

(SL 19 of 2021)

In exercise of the powers conferred by section 50 of the National Conservation Act, 2013, the Cabinet makes the following Regulations —

Citation

1. These Regulations may be cited as the National Conservation (Marine Parks) Regulations, 2021.

Definitions

2. In these Regulations —

“**cast net**” means any net cast by hand by one individual;

“**fry**” means any small silver fish under three inches in length of the herring (*clupeidae*) or anchovy (*engraulidae*) families;

“**fry net**” means any net or device designed for catching fry;

“**kellick**” means a cement block, stone, large weight or other similar object used as an anchor;

“**marine park**” means an area designated by Cabinet under regulation 3;

“**Port Director**” means the Port Director appointed under section 3(6) of the *Port Authority Act (1999 Revision)*;

“**sprat**” means any small silver fish more than three inches but less than six inches in length of the herring (*clupeidae*) or anchovy (*engraulidae*) families;

“**tourist vessel**” means a vessel used to carry paying passengers for sightseeing, wildlife interaction or other tourist activities;

“**wildlife interaction**” means —

- (a) touching or feeding marine life; or
- (b) attempting to touch or feed marine life.

Marine Parks

3. The protected areas designated by Cabinet in the *National Conservation (Protected Areas) Order, 2021* are marine parks for the purpose of prescribing the activities that are permitted in those protected areas.

Categories of marine parks

4. A marine park may be categorized as —
- (a) a marine reserve zone;
 - (b) an environmental zone;
 - (c) a wildlife interaction zone;
 - (d) a line fishing zone;
 - (e) a shore line fishing zone;
 - (f) a no-diving overlay zone; or
 - (g) a spawning aggregation overlay zone.

Marine reserve zones

5. (1) Subject to paragraphs (2) and (3), a person in a marine reserve zone shall not —
- (a) take any specimen; or
 - (b) anchor a vessel.
- (2) Notwithstanding paragraph (1)(a) —
- (a) a person may take fish in a marine reserve zone if the person is —
 - (i) catch-and-release fishing for the following species of fish —
 - (A) tarpon (*Megalops atlanticus*);
 - (B) bonefish (*Albula vulpes*); and
 - (C) permit (*Trachinotus falcatus*); or
 - (ii) taking fry and sprat with a fry net or cast net from the shore, a dock or while standing unaided in water no deeper than four feet and the person takes no more than 2.5 gallons of fry or sprats each day; and



- (b) a licensed lionfish culler may kill or take lionfish in a marine reserve zone if the licensed lionfish culler —
 - (i) uses methods approved by the Council; and
 - (ii) is authorized by the Council to kill or take lionfish in the marine reserve zone.
- (3) Notwithstanding paragraph (1)(b), a person in a marine reserve zone may anchor a vessel not exceeding sixty feet in length if the person —
 - (a) does not use grappling hooks, a mushroom anchor or kellick when anchoring the vessel;
 - (b) anchors the vessel in sand; and
 - (c) uses an anchor, chain, rode or rope which does not touch coral.
- (4) A person shall not cause a tourist vessel to enter into the marine reserve zone designated as ‘LC Bloody Bay’ in Schedule 1 —
 - (a) unless that person holds a permit issued by the Council in accordance with Part 8 of the *National Conservation Council (Licence and Permit) Directives, 2016*; or
 - (b) where entry is prohibited by the conditions of a permit issued to the person by the Council.

Environmental zones

6. A person in an environmental zone shall not —
- (a) take any specimen;
 - (b) damage a natural resource;
 - (c) anchor, moor, dock or ground a vessel;
 - (d) enter into the water;
 - (e) operate a vessel in excess of a speed of five miles per hour; or
 - (f) otherwise disturb the natural environment.

Wildlife interaction zones

7. (1) Subject to paragraph (2), a person in a wildlife interaction zone shall not —
- (a) take any specimen;
 - (b) sell fish food from a vessel;
 - (c) anchor a vessel —
 - (i) in water shallower than three feet deep; or
 - (ii) so that any part of the anchor, chain, rode or rope is within twenty feet of any reef structure; or
 - (d) wear footwear in water shallower than four feet deep.

- (2) Notwithstanding paragraph (1) and subject to section 34(f) of the Act, a person in a wildlife interaction zone may —
 - (a) engage in wildlife interaction in accordance with any orders, guidance notes or Directives issued by the Council; and
 - (b) wear flippers while snorkelling in water deeper than four feet.
- (3) A person shall not cause a tourist vessel to enter a wildlife interaction zone —
 - (a) unless that person holds a permit issued by the Council in accordance with Part 7 of the *National Conservation Council (Licence and Permit) Directives, 2016*; or
 - (b) where entry is prohibited by the conditions of a permit issued to the person by the Council.
- (4) A person shall not engage in wildlife interaction with any specimen in Cayman waters outside of a wildlife interaction zone, except where that person is —
 - (a) fishing in accordance with these Regulations or any other Act; or
 - (b) acting in accordance with a conservation or management plan, permit, order, guidance notes or Directives issued by the Council or these Regulations.

Line fishing zones

8. (1) Subject to paragraph (5), a person in a line fishing zone shall not anchor a vessel.
- (2) A person may take fry and sprat with a fry net or cast net from the shore, a dock or while standing unaided in water no deeper than four feet if the person takes no more than 2.5 gallons of fry or sprats each day.
- (3) A person may by hook and line, take a species of fish (*Teleostei*) set out in Part 2 of Schedule 1 of the Act, which is not otherwise restricted by a species conservation plan or regulations made under the Act.
- (4) A licensed lionfish culler may kill or take lionfish in a line fishing zone if the licensed lionfish culler —
 - (a) uses methods approved by the Council; and
 - (b) is authorized by the Council to kill or take lionfish in the line fishing zone.
- (5) Notwithstanding paragraph (1), a person may anchor a vessel not exceeding sixty feet in length if the person —
 - (a) does not use grappling hooks, a mushroom anchor or kellick when anchoring the vessel;
 - (b) anchors the vessel in sand; and
 - (c) uses an anchor, chain, rode or rope which does not touch coral.



Shore line fishing zone

9. (1) A person in a shore line fishing zone may by hook and line from the shore, a dock or while standing unaided in water no deeper than four feet, take a species of fish (*Teleostei*) set out in Part 2 of Schedule 1 of the Act, which is not otherwise restricted by a species conservation plan or regulations made under the Act.
- (2) A person may take fry and sprat with a fry net or cast net from the shore, a dock or while standing unaided in water no deeper than four feet if the person takes no more than 2.5 gallons of fry or sprats each day.
- (3) A licensed lionfish culler may kill or take lionfish in a shore line fishing zone if the licensed lionfish culler —
- (a) uses methods approved by the Council; and
 - (b) is authorized by the Council to kill or take lionfish in the shore line fishing zone.

No-diving overlay zone

10. (1) A person shall not scuba dive in a no-diving overlay zone unless the person is authorized by the Council to do so under paragraph (3).
- (2) A person who wishes to scuba dive in a no-diving overlay zone shall apply to the Council in the approved form.
- (3) The Council may, upon receipt of an application for authorization under paragraph (2), grant the relevant authorization for scuba diving and the authorization may be granted subject to such conditions, if any, as the Council considers fit.
- (4) A licensed lionfish culler may scuba dive to kill or take lionfish from a no-diving overlay zone if the licensed lionfish culler —
- (a) uses methods approved by the Council; and
 - (b) is authorized by the Council to scuba dive to kill or take lionfish from the no-diving overlay zone.
- (5) Where a no diving overlay zone overlaps or falls within the boundaries of another marine park under these Regulations, paragraph (1) shall apply in addition to the provisions of any other regulation applicable in respect of the overlapping area.
- (6) A person may take a species of marine animal or plant set out in Part 2 of Schedule 1 of the Act, which is not otherwise restricted by a species conservation plan or regulations made under the Act, from a no diving overlay zone which overlays an area of Cayman waters that is not categorized as a marine park under these Regulations.

Spawning aggregation overlay zone

11. (1) During the period beginning on 1st December and ending on 30th April, a person in a spawning aggregation overlay zone shall not —
- (a) take any specimen;
 - (b) enter into the water; or
 - (c) anchor a vessel,
- between the 50 foot and 200 foot depth contours.
- (2) Where a spawning aggregation overlay zone overlaps or falls within the boundaries of another marine park under these Regulations, paragraph (1) shall prevail over any other regulation applicable in respect of the overlapping area.
- (3) During the period beginning on 1st May and ending on 30th November, a person in a spawning aggregation overlay zone which overlaps an area of Cayman waters that is not categorized as a marine park under these Regulations, may take a species of marine animal or plant set out in Part 2 of Schedule 1 of the Act, which is not otherwise restricted by a species conservation plan or regulations made under the Act.

Emergency anchoring

12. No prohibition on anchoring imposed by these Regulations shall apply during a declared state of emergency, during the currency of a hurricane warning or when permission is given by the Port Director to a specific vessel in circumstances which, in the opinion of the Port Director, constitute an emergency.

Designation of zones

13. (1) The areas described in Schedule 1 are designated as a marine reserve zone.
- (2) The areas described in Schedule 2 are designated as an environmental zone.
- (3) The areas described in Schedule 3 are designated as a wildlife interaction zone.
- (4) The areas described in Schedule 4 are designated as a line fishing zone.
- (5) The areas described in Schedule 5 are designated as a shore line fishing zone.
- (6) The areas described in Schedule 6 are designated as a no-diving overlay zone.
- (7) The areas described in Schedule 7 are designated as a spawning aggregation overlay zone.

Repeal of the Marine Conservation (Marine Parks) Regulations (2007 Revision), Marine Conservation Regulations (2004 Revision) and Restricted Marine Areas (Designation) Regulations (2004 Revision)

14. The *Marine Conservation (Marine Parks) Regulations (2007 Revision)*, *Marine Conservation Regulations (2004 Revision)* and *Restricted Marine Areas (Designation) Regulations (2004 Revision)* are repealed.



SCHEDULE 1

(regulation 13)

MARINE RESERVE ZONES

Grand Cayman



Name	Corner ID	Latitude	Longitude
GC Barkers	GC1	19°22.750' N	81°22.876' W
GC Barkers	GC2	19°22.750' N	81°20.789' W
GC Barkers	GC3	19°22.836' N	81°20.705' W
GC Barkers	GC4	19°23.082' N	81°20.970' W
GC Barkers	GC5	19°23.297' N	81°20.758' W
GC Barkers	GC6	19°23.051' N	81°20.493' W
GC Barkers	GC7	19°23.244' N	81°20.302' W
GC Barkers	GC8	19°22.869' N	81°21.671' W
GC Barkers	GC9	19°22.869' N	81°21.584' W
GC Barkers	GC10	19°23.443' N	81°22.130' W
GC Barkers	GC11	19°24.089' N	81°22.130' W
GC Bodden Town	GC57	19°15.873' N	81°16.329' W
GC Bodden Town	GC58	19°15.563' N	81°16.329' W
GC Bodden Town	GC59	19°16.379' N	81°15.247' W
GC Bodden Town	GC60	19°16.124' N	81°14.939' W
GC East End	GC65	19°18.567' N	81°5.420' W
GC East End	GC66	19°18.567' N	81°3.856' W
GC East End	GC67	19°20.367' N	81°5.137' W
GC East End	GC69	19°20.367' N	81°4.421' W
GC Frank Sound	GC61	19°18.025' N	81°10.936' W
GC Frank Sound	GC62	19°17.275' N	81°10.544' W
GC Frank Sound	GC63	19°17.552' N	81°8.445' W
GC Frank Sound	GC64	19°17.377' N	81°8.445' W
GC George Town	GC31	19°17.653' N	81°23.016' W
GC George Town	GC32	19°17.653' N	81°23.256' W
GC George Town	GC33	19°17.632' N	81°23.289' W
GC George Town	GC34	19°17.567' N	81°23.329' W
GC George Town	GC35	19°17.567' N	81°23.431' W
GC George Town	GC41	19°16.849' N	81°23.588' W
GC George Town	GC42	19°16.880' N	81°23.850' W
GC North Sound	GC87	19°21.998' N	81°15.740' W
GC North Sound	GC88	19°22.090' N	81°15.670' W
GC North Sound	GC89	19°21.426' N	81°16.876' W



Name	Corner ID	Latitude	Longitude
GC North Sound	GC90	19°21.442' N	81°16.872' W
GC North Sound	GC91	19°21.329' N	81°16.850' W
GC North Sound	GC92	19°21.313' N	81°16.854' W
GC North Sound	GC95	19°21.555' N	81°16.111' W
GC North Sound	GC97	19°18.690' N	81°17.383' W
GC North Sound	GC98	19°18.644' N	81°17.902' W
GC North Sound	GC99	19°19.942' N	81°17.902' W
GC North Sound	GC100	19°17.859' N	81°18.898' W
GC North Sound	GC101	19°21.841' N	81°18.898' W
GC North Sound	GC102	19°22.859' N	81°18.898' W
GC North Sound	GC103	19°23.095' N	81°18.898' W
GC North Sound	GC108	19°21.841' N	81°17.146' W
GC North Sound	GC109	19°22.671' N	81°17.145' W
GC North Sound	GC110	19°22.952' N	81°17.146' W
GC North Sound	GC111	19°22.703' N	81°16.285' W
GC North Sound	GC112	19°22.965' N	81°16.285' W
GC Queen's Hwy. East	GC73	19°21.212' N	81°5.996' W
GC Queen's Hwy. East	GC74	19°21.445' N	81°5.996' W
GC Queen's Hwy. East	GC75	19°21.286' N	81°7.977' W
GC Queen's Hwy. East	GC76	19°21.484' N	81°7.977' W
GC Queen's Hwy. West	GC77	19°21.180' N	81°9.108' W
GC Queen's Hwy. West	GC78	19°21.496' N	81°9.108' W
GC Queen's Hwy. West	GC79	19°20.918' N	81°10.000' W
GC Queen's Hwy. West	GC80	19°21.160' N	81°10.000' W
GC Seven Mile Beach	GC18	19°21.488' N	81°23.297' W
GC Seven Mile Beach	GC19	19°21.110' N	81°23.739' W
GC Seven Mile Beach	GC20	19°18.377' N	81°23.063' W
GC Seven Mile Beach	GC21	19°18.054' N	81°22.966' W
GC Seven Mile Beach	GC22	19°18.054' N	81°23.171' W
GC Seven Mile Beach	GC23	19°18.084' N	81°23.190' W
GC Seven Mile Beach	GC24	19°18.230' N	81°23.171' W
GC Seven Mile Beach	GC25	19°18.380' N	81°23.325' W
GC Seven Mile Beach	GC26	19°18.434' N	81°23.425' W

Name	Corner ID	Latitude	Longitude
GC Seven Mile Beach	GC27	19°18.462' N	81°23.435' W
GC Seven Mile Beach	GC28	19°18.600' N	81°23.466' W
GC Seven Mile Beach	GC29	19°18.600' N	81°23.657' W
GC South Sound East	GC53	19°16.618' N	81°21.402' W
GC South Sound East	GC54	19°15.897' N	81°20.962' W
GC South Sound East	GC55	19°16.373' N	81°19.429' W
GC South Sound East	GC56	19°16.050' N	81°19.429' W
GC South Sound West	GC47	19°15.945' N	81°22.829' W
GC South Sound West	GC49	19°15.226' N	81°22.829' W
GC South Sound West	GC51	19°16.470' N	81°21.785' W
GC South Sound West	GC52	19°15.800' N	81°21.376' W
GC West Bay Bight	GC14	19°22.338' N	81°25.175' W
GC West Bay Bight	GC15	19°22.338' N	81°25.460' W
GC West Bay Bight	GC16	19°21.807' N	81°23.562' W
GC West Bay Bight	GC17	19°21.516' N	81°23.964' W



Cayman Brac



Name	Corner ID	Latitude	Longitude
CB Bamboo Bay	CB31	19°43.984' N	79°47.525' W
CB Bamboo Bay	CB32	19°44.186' N	79°47.584' W
CB Bamboo Bay	CB33	19°43.739' N	79°48.738' W
CB Bamboo Bay	CB34	19°43.940' N	79°48.858' W
CB Channel Bay	CB5	19°41.018' N	79°53.617' W
CB Channel Bay	CB7	19°40.583' N	79°53.617' W
CB Channel Bay	CB9	19°41.042' N	79°53.169' W
CB Channel Bay	CB10	19°40.640' N	79°53.085' W
CB Public Beach	CB11	19°41.174' N	79°52.048' W
CB Public Beach	CB12	19°40.792' N	79°52.048' W
CB Public Beach	CB13	19°42.012' N	79°49.418' W
CB Public Beach	CB14	19°41.745' N	79°49.306' W
CB Southeast	CB15	19°42.801' N	79°47.299' W
CB Southeast	CB16	19°42.574' N	79°47.252' W
CB Southeast	CB19	19°43.390' N	79°45.046' W
CB Southeast	CB20	19°43.149' N	79°44.911' W
CB Spot Bay	CB27	19°45.300' N	79°45.000' W
CB Spot Bay	CB28	19°45.511' N	79°45.044' W
CB Spot Bay	CB29	19°45.083' N	79°45.657' W
CB Spot Bay	CB30	19°45.215' N	79°45.776' W
CB Stake Bay	CB35	19°43.344' N	79°49.395' W
CB Stake Bay	CB36	19°43.546' N	79°49.525' W
CB Stake Bay	CB37	19°42.631' N	79°50.391' W
CB Stake Bay	CB38	19°42.816' N	79°50.496' W
CB West End	CB1	19°41.051' N	79°53.623' W
CB West End	CB3	19°41.051' N	79°54.360' W
CB West End	CB43	19°41.574' N	79°52.894' W
CB West End	CB44	19°41.769' N	79°52.994' W
CB White Bay	CB39	19°42.170' N	79°51.819' W
CB White Bay	CB40	19°42.472' N	79°51.895' W
CB White Bay	CB41	19°41.796' N	79°52.575' W
CB White Bay	CB42	19°41.953' N	79°52.681' W



Little Cayman



Name	Corner ID	Latitude	Longitude
LC Bloody Bay	LC25	19°42.000' N	80°2.591' W
LC Bloody Bay	LC26	19°42.258' N	80°2.591' W
LC Bloody Bay	LC27	19°40.289' N	80°6.097' W
LC Bloody Bay	LC28	19°40.432' N	80°6.209' W
LC East End	LC17	19°41.809' N	79°58.244' W
LC East End	LC18	19°41.536' N	79°58.244' W
LC East End	LC23	19°42.424' N	79°59.730' W
LC East End	LC24	19°42.742' N	79°59.869' W
LC Preston Bay	LC3	19°39.511' N	80°6.550' W
LC Preston Bay	LC5	19°38.956' N	80°6.550' W
LC Preston Bay	LC7	19°39.460' N	80°5.128' W
LC Preston Bay	LC8	19°39.266' N	80°5.128' W
LC South Hole Sound	LC11	19°39.987' N	80°4.026' W
LC South Hole Sound	LC12	19°39.492' N	80°3.531' W
LC South Hole Sound	LC13	19°40.954' N	80°1.697' W
LC South Hole Sound	LC14	19°40.665' N	80°1.538' W



SCHEDULE 2

(regulation 13)

ENVIRONMENTAL ZONES

Grand Cayman



Name	Corner ID	Latitude	Longitude
GC Little Sound	GC95	19°21.555' N	81°16.111' W
GC Little Sound	GC96	19°21.318' N	81°15.842' W
GC Little Sound	GC97	19°18.690' N	81°17.383' W
GC Little Sound	GC98	19°18.644' N	81°17.902' W
GC Little Sound	GC99	19°19.942' N	81°17.902' W

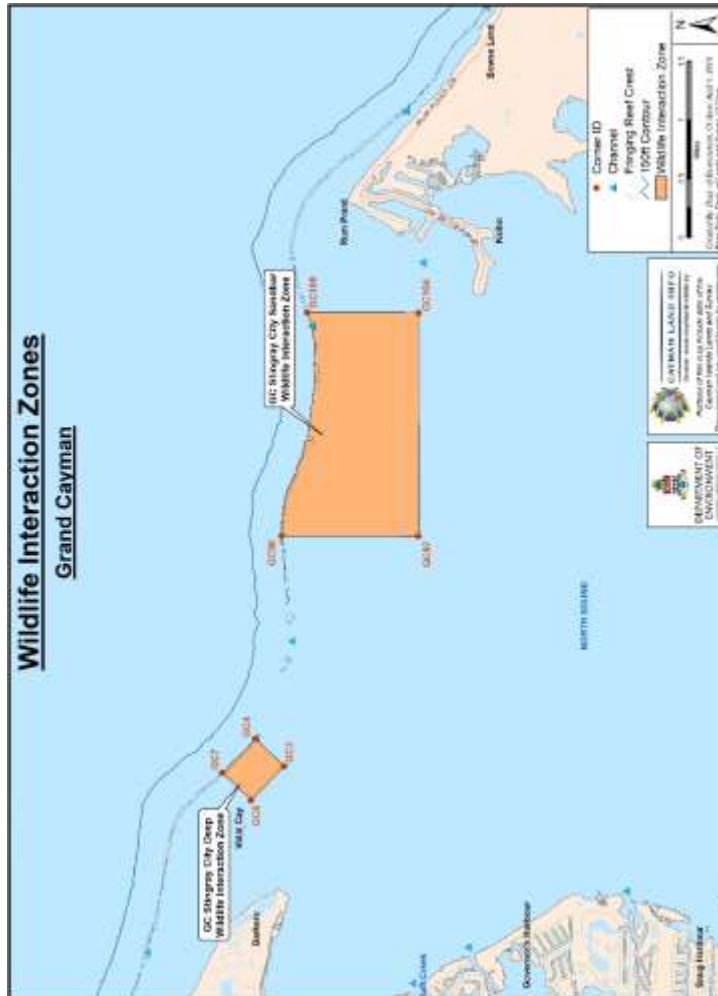


SCHEDULE 3

(regulation 13)

WILDLIFE INTERACTION ZONES

Grand Cayman



Name	Corner ID	Latitude	Longitude
GC Stingray City Deep	GC3	19°22.836' N	81°20.705' W
GC Stingray City Deep	GC4	19°23.082' N	81°20.970' W
GC Stingray City Deep	GC5	19°23.297' N	81°20.758' W
GC Stingray City Deep	GC6	19°23.051' N	81°20.493' W
GC Stingray City Sandbar	GC101	19°21.841' N	81°18.898' W
GC Stingray City Sandbar	GC102	19°22.859' N	81°18.898' W
GC Stingray City Sandbar	GC108	19°21.841' N	81°17.146' W
GC Stingray City Sandbar	GC109	19°22.671' N	81°17.145' W
GC Water Cay	GC89	19°21.426' N	81°16.876' W
GC Water Cay	GC90	19°21.442' N	81°16.872' W
GC Water Cay	GC91	19°21.329' N	81°16.850' W
GC Water Cay	GC92	19°21.313' N	81°16.854' W

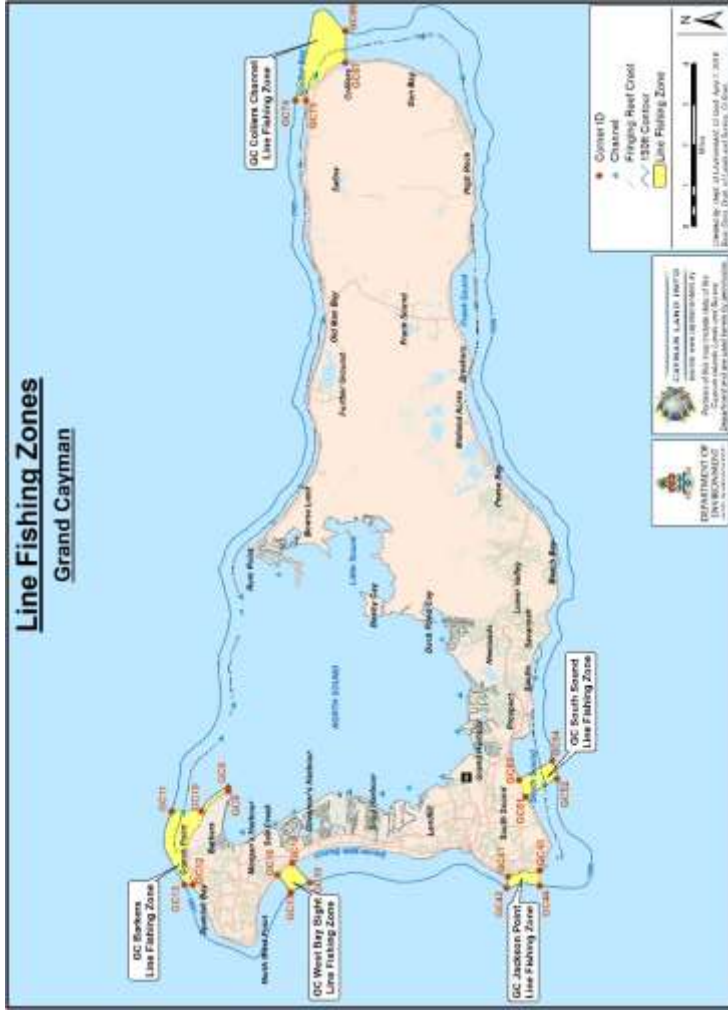


SCHEDULE 4

(regulation 13)

LINE FISHING ZONES

Grand Cayman



Name	Corner ID	Latitude	Longitude
GC Barkers	GC8	19°22.869' N	81°21.671' W
GC Barkers	GC9	19°22.869' N	81°21.584' W
GC Barkers	GC10	19°23.443' N	81°22.130' W
GC Barkers	GC11	19°24.089' N	81°22.130' W
GC Barkers	GC12	19°23.624' N	81°23.790' W
GC Barkers	GC13	19°23.812' N	81°23.790' W
GC Colliers Channel	GC67	19°20.367' N	81°5.137' W
GC Colliers Channel	GC69	19°20.367' N	81°4.421' W
GC Colliers Channel	GC73	19°21.212' N	81°5.996' W
GC Colliers Channel	GC74	19°21.445' N	81°5.996' W
GC Jackson Point	GC41	19°16.849' N	81°23.588' W
GC Jackson Point	GC42	19°16.880' N	81°23.850' W
GC Jackson Point	GC43	19°16.163' N	81°23.446' W
GC Jackson Point	GC44	19°16.163' N	81°23.799' W
GC South Sound	GC51	19°16.470' N	81°21.785' W
GC South Sound	GC52	19°15.800' N	81°21.376' W
GC South Sound	GC53	19°16.618' N	81°21.402' W
GC South Sound	GC54	19°15.897' N	81°20.962' W
GC West Bay Bight	GC16	19°21.807' N	81°23.562' W
GC West Bay Bight	GC17	19°21.516' N	81°23.964' W
GC West Bay Bight	GC18	19°21.488' N	81°23.297' W
GC West Bay Bight	GC19	19°21.110' N	81°23.739' W



Cayman Brac



Name	Corner ID	Latitude	Longitude
CB Spot Bay	CB25	19°45.417' N	79°44.381' W
CB Spot Bay	CB26	19°45.574' N	79°44.388' W
CB Spot Bay	CB27	19°45.300' N	79°45.000' W
CB Spot Bay	CB28	19°45.511' N	79°45.044' W



Little Cayman



Name	Corner ID	Latitude	Longitude
LC Charles Bight	LC15	19°41.393' N	80°0.671' W
LC Charles Bight	LC16	19°41.119' N	80°0.551' W
LC Charles Bight	LC17	19°41.809' N	79°58.244' W
LC Charles Bight	LC18	19°41.536' N	79°58.244' W
LC South Hole Sound	LC7	19°39.460' N	80°5.128' W
LC South Hole Sound	LC8	19°39.266' N	80°5.128' W
LC South Hole Sound	LC9	19°39.677' N	80°4.698' W
LC South Hole Sound	LC10	19°39.101' N	80°4.698' W



SCHEDULE 5

(regulation 13)

SHORE LINE FISHING ZONES

Grand Cayman



Name	Corner ID	Latitude	Longitude
GC George Town	GC20	19°18.377' N	81°23.063' W
GC George Town	GC21	19°18.054' N	81°22.966' W
GC Kaibo	GC93	19°21.346' N	81°16.553' W
GC Kaibo	GC94	19°21.334' N	81°16.485' W

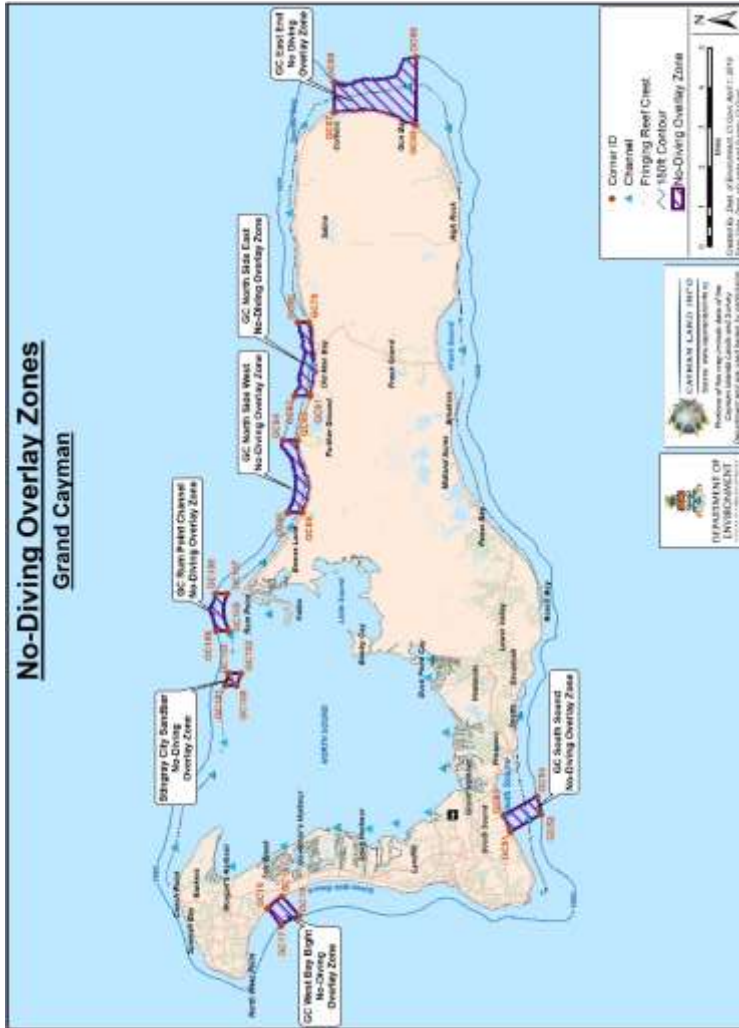


SCHEDULE 6

(regulation 13)

NO-DIVING OVERLAY ZONES

Grand Cayman



Name	Corner ID	Latitude	Longitude
GC East End	GC65	19°18.567' N	81°5.420' W
GC East End	GC66	19°18.567' N	81°3.856' W
GC East End	GC67	19°20.367' N	81°5.137' W
GC East End	GC69	19°20.367' N	81°4.421' W
GC North Side East	GC79	19°20.918' N	81°10.000' W
GC North Side East	GC80	19°21.160' N	81°10.000' W
GC North Side East	GC81	19°20.889' N	81°11.700' W
GC North Side East	GC82	19°21.233' N	81°11.700' W
GC North Side West	GC83	19°21.162' N	81°12.726' W
GC North Side West	GC84	19°21.483' N	81°12.726' W
GC North Side West	GC85	19°21.061' N	81°14.400' W
GC North Side West	GC86	19°21.376' N	81°14.400' W
GC Rum Point Channel	GC109	19°22.671' N	81°17.145' W
GC Rum Point Channel	GC110	19°22.952' N	81°17.146' W
GC Rum Point Channel	GC111	19°22.703' N	81°16.285' W
GC Rum Point Channel	GC112	19°22.965' N	81°16.285' W
GC South Sound	GC51	19°16.470' N	81°21.785' W
GC South Sound	GC52	19°15.800' N	81°21.376' W
GC South Sound	GC53	19°16.618' N	81°21.402' W
GC South Sound	GC54	19°15.897' N	81°20.962' W
GC Stingray City Sandbar	GC104	19°22.500' N	81°18.407' W
GC Stingray City Sandbar	GC105	19°22.755' N	81°18.407' W
GC Stingray City Sandbar	GC106	19°22.397' N	81°18.130' W
GC Stingray City Sandbar	GC107	19°22.668' N	81°18.130' W
GC West Bay Bight	GC16	19°21.807' N	81°23.562' W
GC West Bay Bight	GC17	19°21.516' N	81°23.964' W
GC West Bay Bight	GC18	19°21.488' N	81°23.297' W
GC West Bay Bight	GC19	19°21.110' N	81°23.739' W



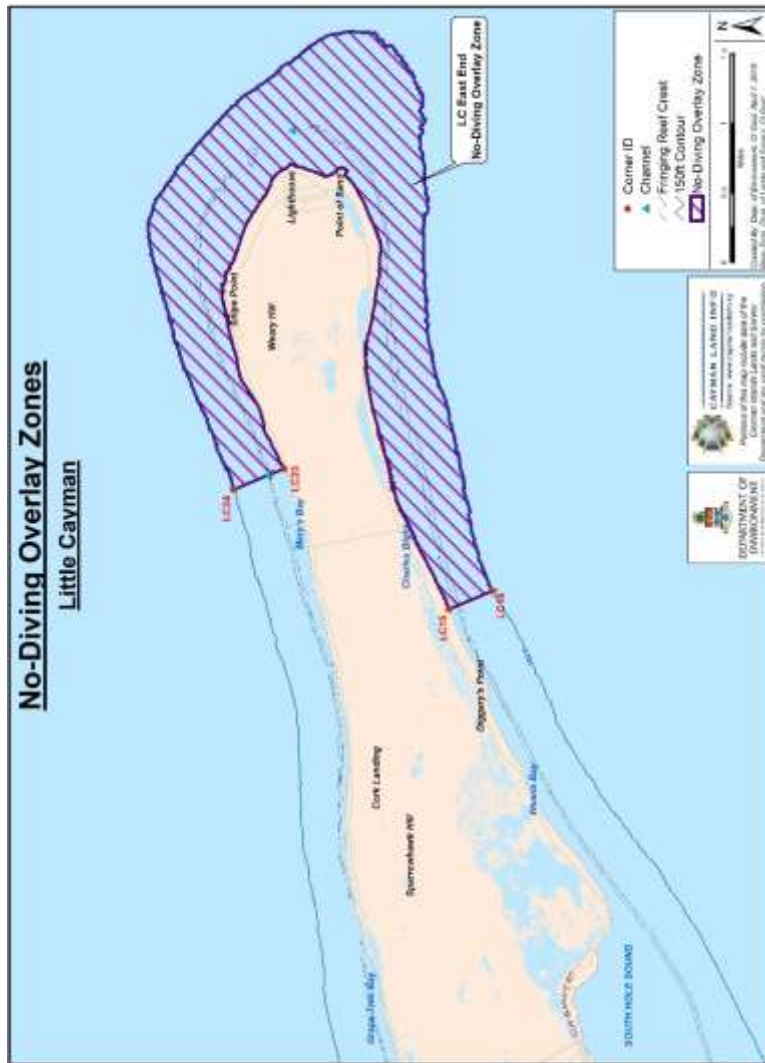
Cayman Brac



Name	Corner ID	Latitude	Longitude
CB Southeast	CB17	19°43.110' N	79°45.900' W
CB Southeast	CB18	19°42.843' N	79°45.900' W
CB Southeast	CB19	19°43.390' N	79°45.046' W
CB Southeast	CB20	19°43.149' N	79°44.911' W



Little Cayman



Name	Corner ID	Latitude	Longitude
LC East End	LC15	19°41.393' N	80°0.671' W
LC East End	LC16	19°41.119' N	80°0.551' W
LC East End	LC23	19°42.424' N	79°59.730' W
LC East End	LC24	19°42.742' N	79°59.869' W

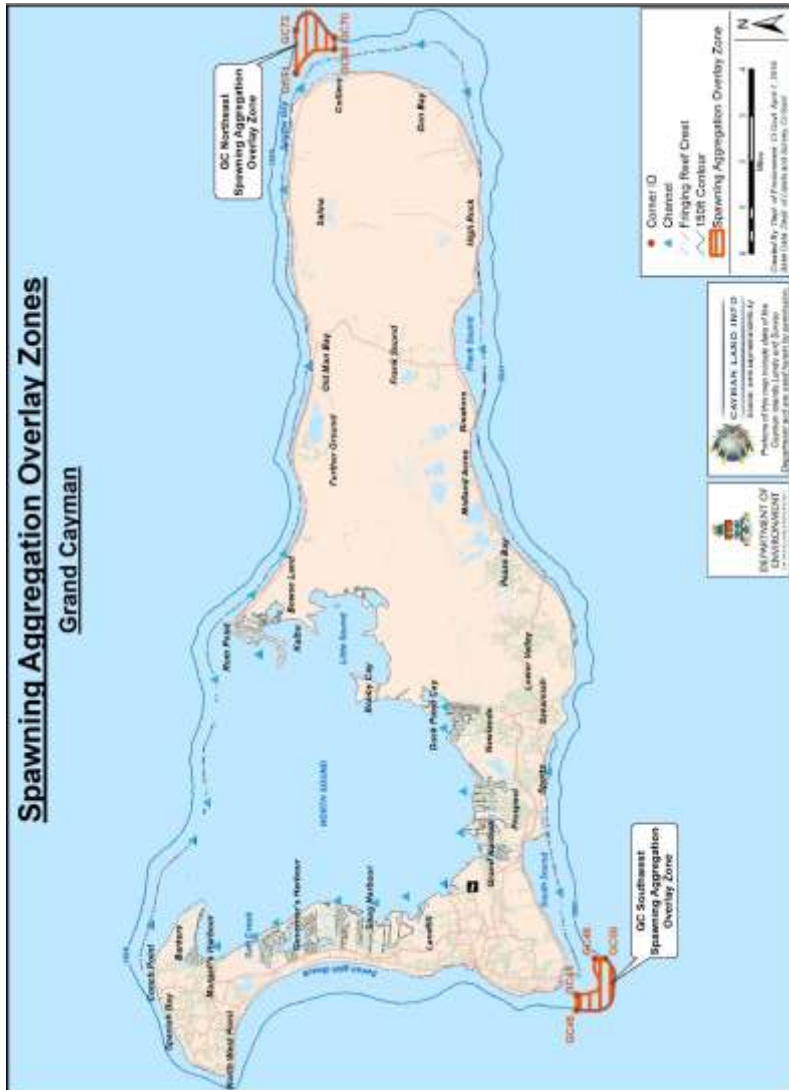


SCHEDULE 7

(regulation 13)

SPAWNING AGGREGATION OVERLAY ZONES

Grand Cayman



Name	Corner ID	Latitude	Longitude
GC Northeast	GC68	19°20.367' N	81°4.633' W
GC Northeast	GC70	19°20.367' N	81°4.404' W
GC Northeast	GC71	19°21.100' N	81°5.117' W
GC Northeast	GC72	19°21.100' N	81°4.257' W
GC Southwest	GC45	19°15.750' N	81°23.550' W
GC Southwest	GC46	19°15.750' N	81°23.854' W
GC Southwest	GC48	19°15.396' N	81°22.829' W
GC Southwest	GC50	19°15.211' N	81°22.829' W



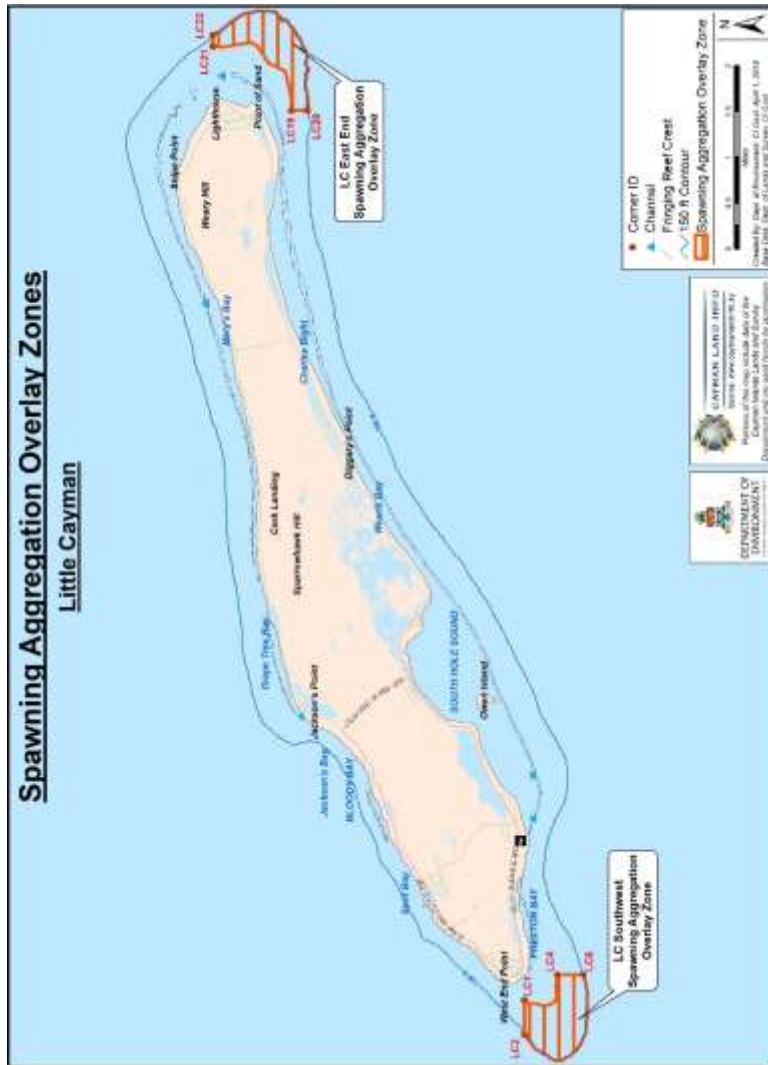
Cayman Brac



Name	Corner ID	Latitude	Longitude
CB East End	CB21	19°44.952' N	79°43.345' W
CB East End	CB22	19°44.686' N	79°43.061' W
CB East End	CB23	19°45.145' N	79°42.339' W
CB East End	CB24	19°45.533' N	79°42.921' W
CB Southwest	CB2	19°41.051' N	79°53.950' W
CB Southwest	CB4	19°41.051' N	79°54.353' W
CB Southwest	CB6	19°40.765' N	79°53.617' W
CB Southwest	CB8	19°40.590' N	79°53.617' W



Little Cayman



Name	Corner ID	Latitude	Longitude
LC Southeast	LC19	19°41.690' N	79°57.835' W
LC Southeast	LC20	19°41.535' N	79°57.835' W
LC Southeast	LC21	19°42.435' N	79°57.183' W
LC Southeast	LC22	19°42.435' N	79°57.071' W
LC Southwest	LC1	19°39.517' N	80°6.800' W
LC Southwest	LC2	19°39.517' N	80°7.153' W
LC Southwest	LC4	19°39.200' N	80°6.550' W
LC Southwest	LC6	19°38.952' N	80°6.550' W



Name	Corner ID	Latitude	Longitude
12 Mile West	12Mile1	19°20.008' N	81° 36.753' W
12 Mile West	12Mile2	19°19.008' N	81° 36.753' W
12 Mile West	12Mile3	19° 19.008' N	81° 35.753' W
12 Mile West	12Mile4	19° 20.008' N	81° 35.753' W
12 Mile East	12Mile5	19° 20.808' N	81°34.153' W
12 Mile East	12Mile6	19° 20.008' N	81° 34.153' W
12 Mile East	12Mile7	19° 20.008' N	81°33.153' W
12 Mile East	12Mile8	19° 20.808' N	81° 33.158' W

Made in Cabinet the 9th day of March, 2021.

Kim Bullings
Clerk of the Cabinet

