



Displaced Tourism Employees Survey Report

16 July 2021

Contents

Introduction	3
Methodology.....	3
Profile of Stipend Recipients.....	4
Gender	4
Age of Persons Receiving Stipend	5
Pre-COVID-19 Employment	8
Type of Visitor Served (Stay-over vs Cruise)	9
Pre-COVID-19 Employment by Tourism Sector	9
Pre-COVID-19 Supervisory and Managerial Roles Held	10
Years of Experience in the Tourism Sector	12
Current Status	13
Vaccination Status.....	18
WORC Registration Status.....	21
Characteristics of Stipend Recipients by District	23

DRAFT

Introduction

The primary goal of this project was to identify opportunities for persons receiving the Displaced Tourism Employees Stipend to return to work. The Ministry of Tourism and Transport and the Department of Tourism will use the findings to hold the private sector accountable for ensuring there are opportunities afforded to the many qualified Caymanians willing and able to return to work. This information will assist the Cayman Islands Government in assessing the needs of the tourism sector in areas such as human capital development (e.g. training, workforce planning, strategic development of talent, etc.). Ultimately, these results will help to reaffirm the importance of the tourism sector for Caymanians and the economy.

Methodology

The Cayman Islands Department of Tourism designed a short online survey in collaboration with the Cayman Islands Tourism Association (CITA), Workforce Opportunities & Residency Cayman (WORC) and the Ministry of Tourism and Transport. The collection of responses to the survey was done between 23 June and 2 July 2021. The deadline was extended to Tuesday, 6 July, to facilitate more online responses. Stipend recipients who did not complete the survey by the deadline were called by phone on 9 July 2021 by CIDOT and allowed to complete the survey.

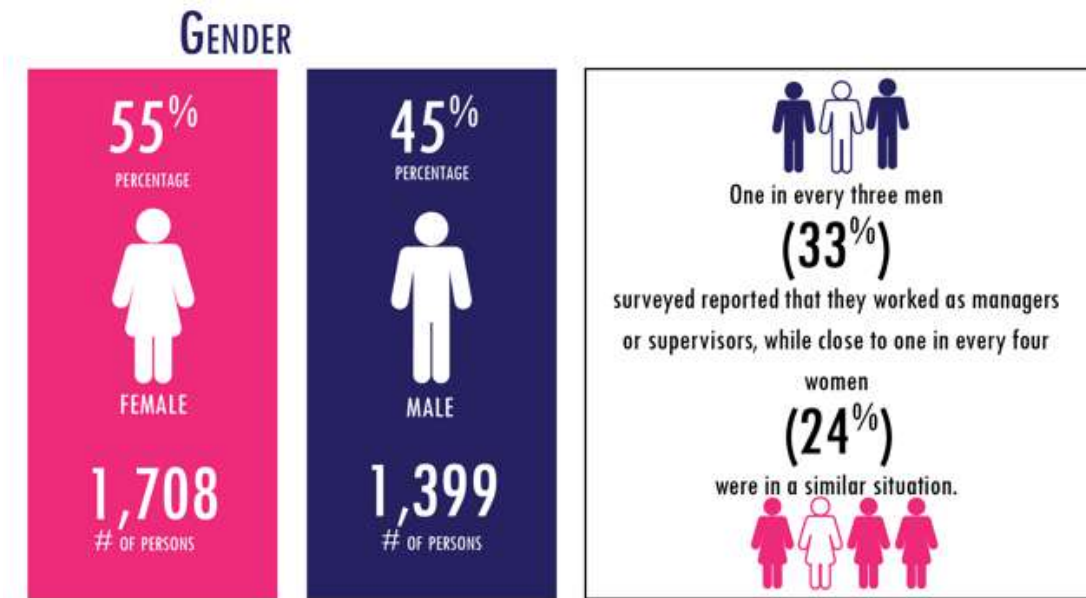
The online survey aimed to get an overview of the Ministry of Tourism Displaced Tourism Employee Stipend Recipients. Topics of focus included pre-COVID-19 employment, current employment status/situation, employment plans once the border reopens, employment endeavours in the next 3-5 years and interest in training.

The online survey was completed by 3,107 current Ministry of Tourism Stipend recipients, 91.5% of the 3,396 total stipend recipients. An effort is being made to collect responses from the stipend recipients who have not yet done the survey. The Cayman Islands Department of Tourism (CIDOT) team is presently trying to assist the 289 outstanding persons who have not completed the survey.

Profile of Stipend Recipients

Gender

There was an equitable ratio of men and women who are presently receiving the displaced tourism workers stipend.



One in every three men (33%) surveyed reported that they worked as managers or supervisors, while close to one in every four women (24%) were in a similar situation. One of the possible reasons for a lower percentage of women in supervisory positions could be that 60% of females were employed in Accommodation or Retail pre-COVID-19. These industries generally have a higher supervisor-to-staff ratio. Most of the men surveyed (999 or 71%) are employed in Watersports, Accommodations, Taxi Operation, or Tour Operators.

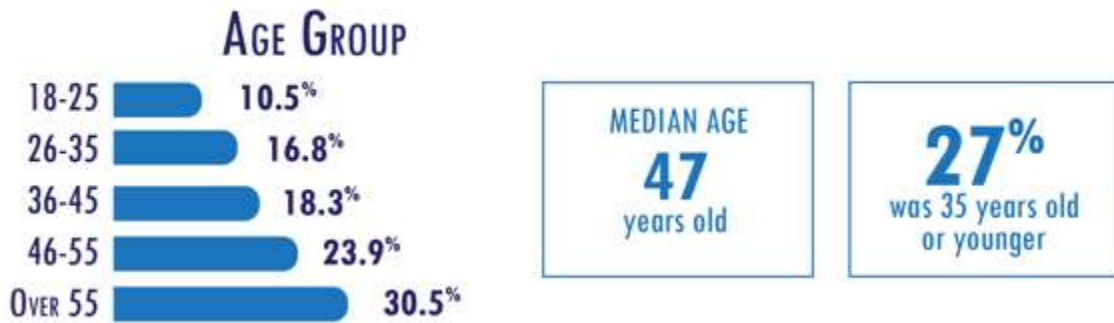
Table 1: Number of Respondents by Sector and Gender

Tourism Sector	Female	Male	% Female	% Male
Accommodations - Hotels	638	318	67%	33%
Accommodations - Other	140	34	80%	20%
Airport Services	31	46	40%	60%
Attractions	64	65	50%	50%
Food Services (Restaurants, Bars, Catering)	148	99	60%	40%
Other Activities/ Entertainment	17	34	33%	67%
Retail	268	60	82%	18%
Transportation - Car Rental	22	24	48%	52%
Transportation - Cruise Tender		17	0%	100%
Transportation - Other	6	8	43%	57%
Transportation - Public Buses	6	21	22%	78%
Transportation - Taxis	131	139	49%	51%
Transportation - Tour Operators	62	131	32%	68%
Travel Agency	11	2	85%	15%
Watersports	119	377	24%	76%
Other	45	24	65%	35%
Total	1,708	1,399	55%	45%

Age of Persons Receiving Stipend

The age of persons receiving the stipend skews towards the older age group, with 50% of the persons who completed the survey being over the age of 47. Only 27% of respondents were 35 years old or younger. The average age of respondents was 46.3 years old. Females had an average age of 47.4 years old, while males were 44.9 years old.

This shows the urgent need to put programmes in place to get young Caymanians more involved in the tourism industry.





Of the major employment sectors, Taxi Operators (57 years) and Public Bus Operators (53 years) reported the highest average age. The sectors with the lowest average age were Watersports (40 years), Car Rentals (41 years) and Attractions (43 years).



This information will form the base for assessing and measuring the success of future government initiatives that will be geared towards getting younger Caymanians involved in the tourism industry.

AVERAGE AGE BY TOURISM SECTOR

TOURISM SECTOR	FEMALE 	MALE 	OVERALL
ACCOMMODATIONS - HOTELS	47.8	41.9	45.8
ACCOMMODATIONS - OTHER	51.4	52.2	51.6
AIRPORT SERVICES	43.3	49.7	47.1
ATTRACTIONS	42.1	42.9	42.5
FOOD SERVICES (RESTAURANTS, BARS, CATERING)	46.6	42.1	44.8
RETAIL	45.6	42.6	45
TRANSPORTATION - CAR RENTAL	39.6	42	40.8
TRANSPORTATION - CRUISE TENDER		46.6	46.6
TRANSPORTATION - OTHER	45.3	43.4	44.2
TRANSPORTATION - PUBLIC BUSES	52.5	52.7	52.6
TRANSPORTATION - TAXIS	56.8	56.3	56.6
TRANSPORTATION - TOUR OPERATORS	47.1	52.7	50.9
TRAVEL AGENCY	54.2	63	55.5
WATERSPORTS	41.4	39.9	40.3
OTHER ACTIVITIES/ ENTERTAINMENT	46.5	48.3	47.7
OTHER	46.2	47	46.5

Pre-COVID-19 Employment

PRE COVID-19 EMPLOYMENT

Did you primarily serve stay-over visitors or cruise visitors?

STAYOVER



The accommodation sector accounted for 1,130 of the 3,107 (36%) persons.

57% of the persons who stated that they primarily served stay-over visitors.

MEDIAN AGE

48

MARRIED

1169 | 60%

CURRENTLY EMPLOYED



CRUISE



Workers from cruise tendering, tour operators, water-sports, attractions, and the retail trade stated that they primarily served cruise passengers.

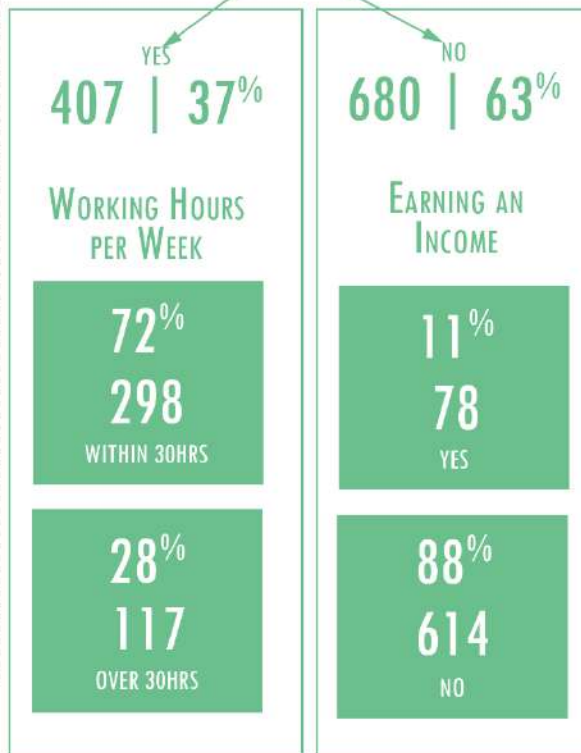
MEDIAN AGE

47

MARRIED

602 | 45%

CURRENTLY EMPLOYED



Type of Visitor Served (Stay-over vs Cruise)

Most stipend recipients reported that they primarily served stay-over visitors. Even though cruise was selected by just 36%, this is large enough to impact the overall wellbeing of tourism workers. In addition, it should be noted that many persons who selected the stay-over option are also impacted by cruise visitation.

Table 2: Type of Visitor Served (Stay-over vs Cruise)

	Count	% Share
Cruise	1,107	36%
Stay-over	2,000	64%
Total	3,107	100%

Pre-COVID-19 Employment by Tourism Sector

The Accommodation sector accounted for 1,130 of the 3,107 (36%) persons surveyed; this is more than one in every three persons. The number of applicants from the Accommodation sector was 57% of the persons who stated that they primarily served stay-over visitors.

Other sectors with workers who stated that they were primarily impacted by stay-over visitation were Airport Services, Food Services, and Car Rentals.

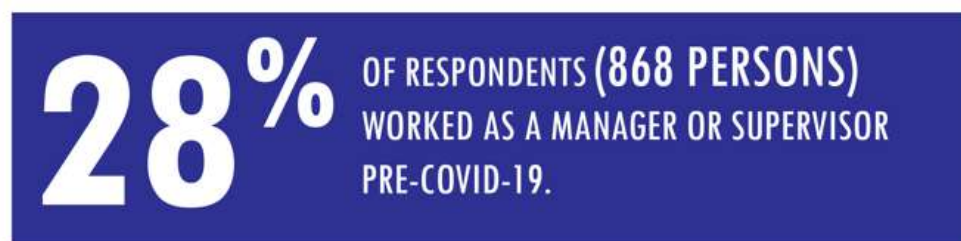
Workers from Cruise Tendering, Tour Operators, Watersports, Attractions, and the Retail trade stated that they primarily served cruise passengers.

Table 3: Pre-COVID-19 Employment by Tourism Sector

Tourism Sector	Cruise	Stay-over	Total	% Share (Cruise)	% Share (Stay-over)
Accommodations - Hotels		956	956	0%	100%
Accommodations - Other		174	174	0%	100%
Airport Services	3	74	77	4%	96%
Attractions	100	29	129	78%	22%
Food Services (Restaurants, Bars, Catering)	78	169	247	32%	68%
Other Activities/ Entertainment	18	33	51	35%	65%
Retail	260	68	328	79%	21%
Transportation - Car Rental	4	42	46	9%	91%
Transportation - Cruise Tender	17		17	100%	0%
Transportation - Other	7	7	14	50%	50%
Transportation - Public Buses	18	9	27	67%	33%
Transportation - Taxis	96	174	270	36%	64%
Transportation - Tour Operators	167	26	193	87%	13%
Travel Agency	1	12	13	8%	92%
Watersports	285	211	496	57%	43%
Other	20	49	69	29%	71%
Grand Total	1,107	2,000	3,107	36%	64%

Pre-COVID-19 Supervisory and Managerial Roles Held

28% of respondents (868 persons) worked as a manager or supervisor pre-COVID-19. As expected, with the level of entrepreneurship in these sectors, the Transportation and Watersports sectors accounted for the highest rate of persons being in a manager or supervisory role.



HOTEL ACCOMMODATIONS AND ATTRACTIONS RECORDED THE LOWEST LEVEL OF PERSONS IN MANAGEMENT OR SUPERVISORY ROLES.

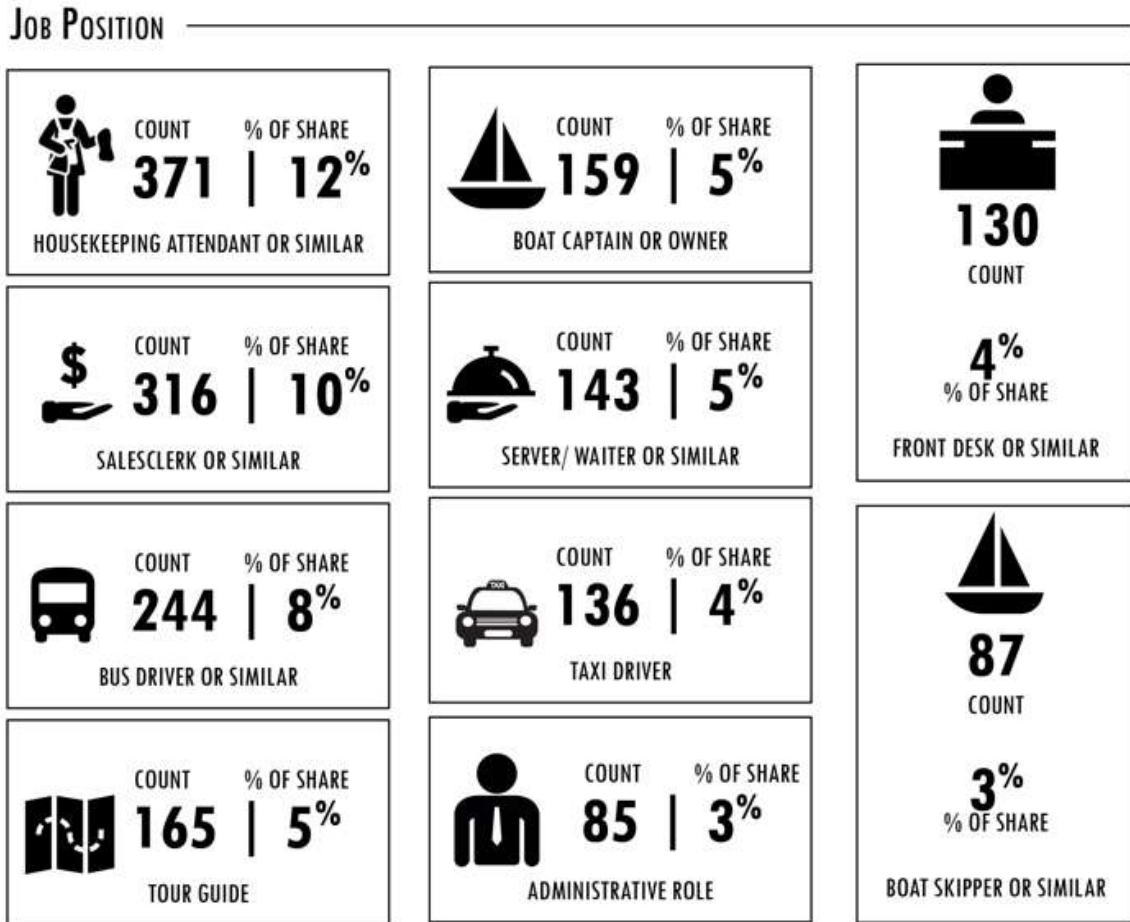
Hotel Accommodations and Attractions recorded the lowest level of persons in management or supervisory positions. This could be a result of these sectors having a low supervisor-to-staff ratio. Further investigations can be done across all tourism sectors to determine if the cause is one or a combination of the following factors:

- Supervisor-to-staff ratio.
- Some sectors providing a challenging career path for qualified Caymanians to achieve success through growth within an organization.
- The need for the development of skills in the population to qualify for these roles.

Table 4: Number of Persons in Managerial or Supervisory Positions

Tourism Sector			% of Persons in Manager/Supervisor Role
	No	Yes	
Accommodations - Hotels	792	164	17%
Accommodations - Other	115	59	34%
Airport Services	56	21	27%
Attractions	104	25	19%
Food Services (Restaurants, Bars, Catering)	192	55	22%
Other Activities/ Entertainment	30	21	41%
Retail	221	107	33%
Transportation - Car Rental	37	9	20%
Transportation - Cruise Tender	13	4	24%
Transportation - Other	9	5	36%
Transportation - Public Buses	19	8	30%
Transportation - Taxis	222	48	18%
Transportation - Tour Operators	103	90	47%
Travel Agency	9	4	31%
Watersports	269	227	46%
Other	48	21	30%
Total	2,239	868	28%

Housekeeping, Salesclerk, and Bus Driver were the top three positions held by respondents before COVID-19.



Years of Experience in the Tourism Sector

Survey respondents were asked how many years of experience they had in the tourism industry. 70% of stipend recipients indicated they had over 6 years of experience.

Table 5: Years of Experience in the Tourism Industry

Years of Experience	Count	Share
0-2 years	237	8%
2-4 years	356	11%
4-6 years	346	11%
Over 6 years	2,168	70%
Total	3,107	100%

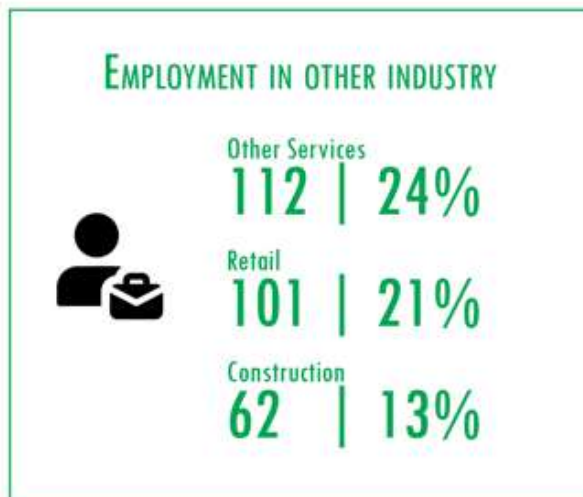
Current Status

When stipend recipients were asked about their current employment status, 51% (1,570 persons) stated they are presently employed.



1,384 or 90%
of the persons who are not employed does not have another source of income.

The main reason for not being employed is because of redundancy, termination or lack of work.



Self-employed persons represent 14% (219 persons) of the 1,570 currently employed persons. When the employed persons were asked about the number of days they are presently working, 1,021 or 65% indicated they are currently not working a typical five-day workweek. The respondents were then asked how many hours they are currently working per week. 1,158 persons or 74% indicated they are working fewer than 30 hours per week. While being employed, 1,095 persons or 70% stated they would be interested in obtaining another job to supplement their income.

Of the 1,570 employed, 1,098 (70%) are employed in the tourism industry. The remaining 472 persons are employed in various industries across the economy. Other Services (112 persons), Retail (101 persons) and Construction (62 persons) were the leading employers of displaced tourism employees.

Table 6: Employment in Other Industries

Industry	Count	% Share
Other Services (Secretary, Insurance, Marketing, etc.)	112	24%
Retail	101	21%
Construction	62	13%
Government	50	11%
Healthcare	42	9%
Financial Services	24	5%
Transportation and Food Delivery	22	5%
Trade: Automotive, Welding, Maintenance, etc.	17	4%
Domestic Services, Janitorial, Nanny, Gardening, etc.	15	3%
Education	13	3%
Real Estate	7	1%
Agriculture	7	1%
Total	472	100%

89% (420 persons) of the persons employed in another industry intend to return to the tourism industry.

DO YOU WISH TO WORK IN THE SAME JOB POSITION YOU HAD PRIOR TO COVID-19?

Return to Pre-COVID position



NO
13% | 416

YES
87% | 2,691

TOTAL
3,107

A large majority (2,691 persons or 87%) of the surveyed persons would like to return to the same job position they had before COVID-19. There is also a high level of interest in tourism-related training programmes; 84% or 2,609 persons stated that they would be willing to participate.

Unemployed survey respondents were asked if they had another source of income. 1,384 persons or 90% stated that they do not have another source of income. The main reason for not being employed is redundancy, termination, or lack of work.

Table 7: Reasons for Unemployment

	Count	% Share
Redundancy/Terminated/Lack of work	1,310	85%
Medical	90	6%
Retired	57	4%
Not Job Searching	47	3%
Other	33	2%
Total	1,537	100%

Respondents were asked what area of the Cayman Islands' tourism and hospitality industry they are aiming for in the next 3-5 years. Accommodation Guest Relations (e.g. Front desk, Concierge, etc.) was the most popular area of interest. The level of interest in Accommodation Guest Relations is driven by females (459 persons). More males (364 persons) than females (197 persons) are interested in being Tour Guides in the future. A similar trend is evident in the Watersports sector, which had 154 males interested compared to 36 females.

Table 8: Top 10 Areas of Interest in the Next 3-5 Years by Gender

	Female	Male	Overall Top 10	% of Total Respondents
Accommodation Guest Relations (e.g. Front desk, Concierge)	459	169	628	20%
Tour Guide	197	364	561	18%
Food and Beverage Services (e.g. chef, waiter)	210	152	362	12%
Marketing and Public Relations	145	98	243	8%
Watersports	36	154	190	6%
Housekeeping	149	16	165	5%
Event Planning	84	55	139	4%
Travel Agent	96	40	136	4%
Transportation - Taxis	64	70	134	4%
Retail	74	23	97	3%
Maintenance	11	42	53	2%
Arts and Entertainment	16	26	42	1%
Other	167	190	357	11%

The highest average age was recorded for Taxi Operators (55.7) and Housekeeping (54.5) when persons were asked what area of the Cayman Islands' tourism and hospitality industry, they are aiming for in the next 3-5 years.

When the information is viewed by gender, males interested in Watersports had the lowest average age of 40.2, while females interested in Housekeeping had the highest average age of 55.6.

Interest in Food and Beverage Services had the most significant age gap, with females at an average age of 46.7 and males at 40.6.

Table 9: Top 10 Areas of Interest in the Next 3-5 Years by Average Age

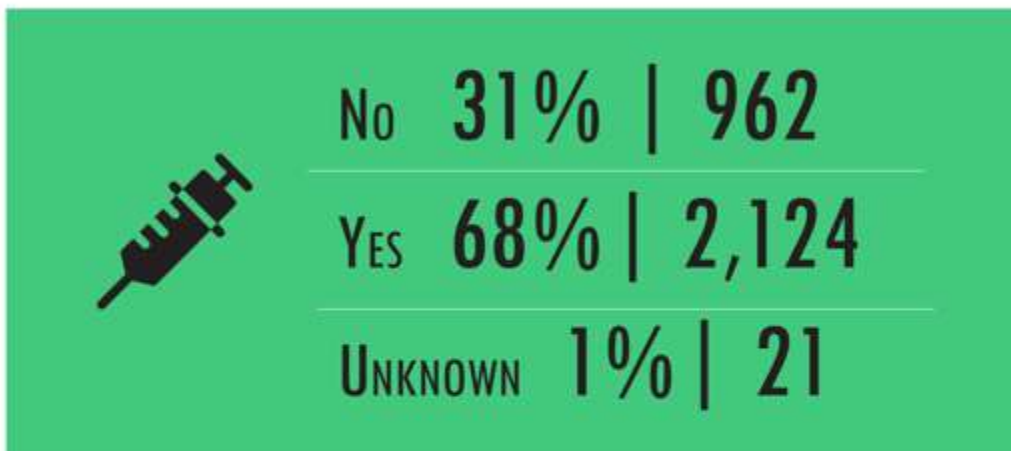
	Female	Male	Total
Accommodation Guest Relations (e.g. Front desk, Concierge)	46.9	40.6	45.3
Tour Guide	47.7	46.5	46.9
Food and Beverage Services (e.g. chef, waiter)	48.0	42.3	45.6
Marketing and Public Relations	42.1	43.2	42.6
Watersports	41.8	40.2	40.5
Housekeeping	54.3	55.6	54.5
Event Planning	43.3	41.3	42.5
Travel Agent	42.3	42.8	42.4
Transportation - Taxis	56.4	55.1	55.7
Retail	47.7	44.1	46.8
Maintenance	51.0	53.0	52.6
Arts and Entertainment	54.8	47.4	50.2
Other	48.2	46.9	47.5

DRAFT

Vaccination Status

2,124 persons (68%) stated that they are presently vaccinated. Of the 962 persons who are not vaccinated, 73% (692 persons) would consider getting the COVID-19 vaccine if they are employed in the tourism industry. Over 91% (2,816 persons) of the survey respondents are vaccinated or would consider getting vaccinated.

VACCINATION



seven out of every ten persons over the age of 35 are vaccinated compared to only 5 in every ten persons below 35 years old.

The vaccination rate for employed persons was

75% compared to **62%**
for unemployed stipend recipients.

90%

Are vaccinated or would consider getting vaccinated

More than seven out of every ten persons over 35 years old are vaccinated compared to only five in every ten persons below 35 years old.

All eleven survey respondents in Little Cayman stated that they are vaccinated. Bodden Town (66%), East End (67%) and West Bay (67%) recorded the lowest vaccination rates.

The vaccination rate for employed persons was 75% compared to 62% for unemployed stipend recipients. The lowest vaccination rates were recorded in Car Rental (46%), Tour Operators (62%), and Attractions (64%).

Table 10: Profile of Respondents by Vaccination Status

	Not vaccinated	Vaccinated	Unknown	% Vaccinated
Stipend Recipients	962	2,124	21	68%
Gender				
Female	498	1,197	13	70%
Male	464	927	8	66%
Age Group				
18-25	169	153	4	47%
26-35	233	286	2	55%
36-45	161	406	1	71%
46-55	194	545	3	73%
Over 55	205	733	11	77%
District				
Bodden Town	215	430	3	66%
Cayman Brac	10	26		72%
East End	30	64	1	67%
George Town	283	682	8	70%
Little Cayman		11		100%
North Side	24	76		76%
West Bay	400	834	9	67%
Status				
Unemployed	571	954	12	62%
Employed	391	1169	9	75%

	Not vaccinated	Vaccinated	Unknown	% Vaccinated
Visitors Served				
Cruise	419	683	5	62%
Stay-over	543	1,440	16	72%
Pre-COVID-19 Tourism Sector				
Accommodations - Hotels	268	683	5	71%
Accommodations - Other	35	138	1	79%
Airport Services	23	54		70%
Attractions	45	83	1	64%
Food Services (Restaurants, Bars, Catering)	74	170	3	69%
Retail	91	236	1	72%
Transportation - Car Rental	24	21	1	46%
Transportation - Cruise Tender	2	15		88%
Transportation - Public Buses	9	17	1	63%
Transportation - Taxis	82	184	4	68%
Transportation - Tour Operators	74	119		62%
Transportation - Other	4	10		71%
Watersports	192	301	3	61%
Travel Agency	1	11	1	85%
Other Activities/ Entertainment	19	32		63%
Other	19	50		72%
WORC Status				
Not Registered	604	1,450	17	70%
Registered	358	673	4	65%
Employed Persons Weekly Hours				
30 hours or less	299	854	5	74%
Over 30 hours	92	315	4	77%

WORC Registration Status

As can be seen below, 67% of persons receiving a monthly tourism stipend are not registered with WORC. There were 2,071 persons not registered. There are no clear patterns in the characteristics of persons who are not registered with WORC. For example, 70% of employed persons are not registered with WORC compared to 63% of unemployed persons.

There is an opportunity for WORC to encourage persons to see registration as a priority when they are unemployed. There are no clear differences in registration status with WORC when a comparative analysis is done based on the type of visitor served, sector the recipient worked in pre-COVID-19, vaccination status, or the hours' persons are presently working.

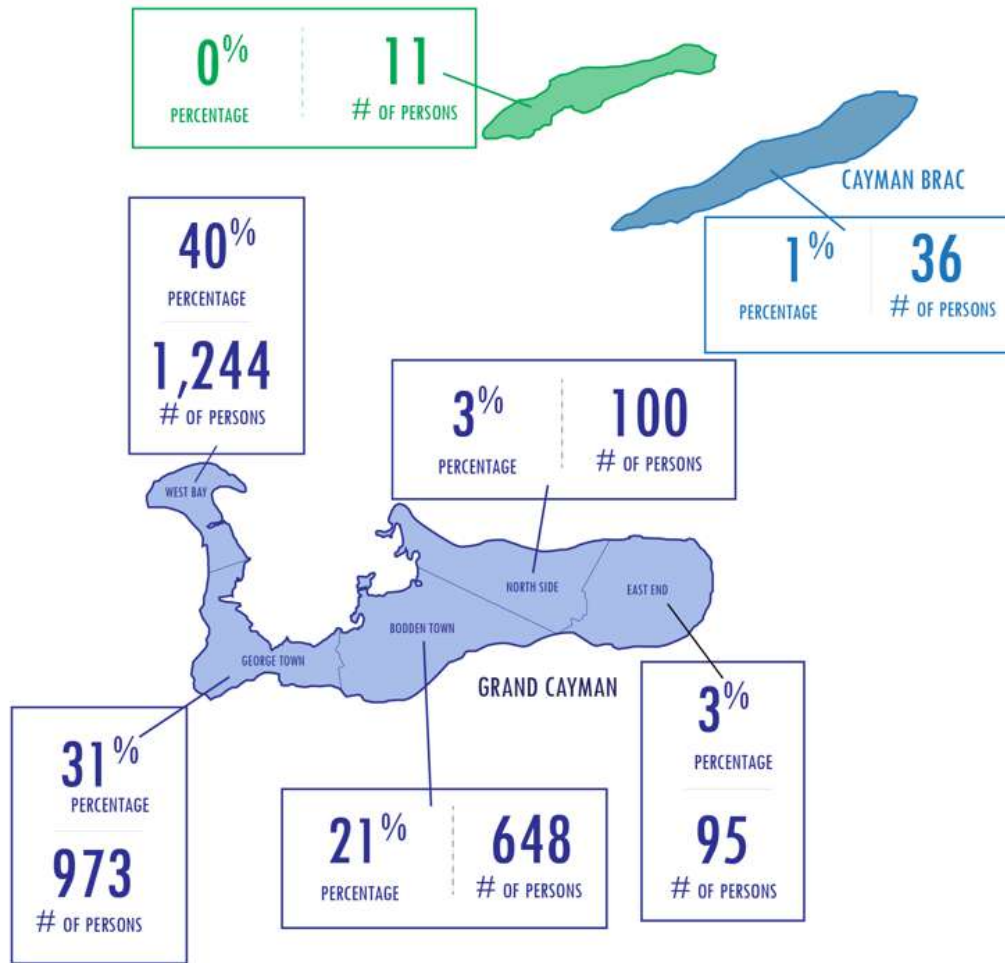
Table 11: Profile of Respondents by WORC Registration Status

	No	Yes	% Not Registered with WORC
Stipend Recipients	2,071	1,036	67%
Status			
Unemployed	975	562	63%
Employed	1096	474	70%
Visitors Served			
Cruise	712	395	64%
Stay-over	1359	641	68%
Pre-COVID-19 Tourism Sector			
Accommodations - Hotels	597	359	62%
Accommodations - Other	126	48	72%
Airport Services	55	22	71%
Attractions	84	45	65%
Food Services (Restaurants, Bars, Catering)	157	90	64%

	No	Yes	% Not Registered with WORC
Retail	201	127	61%
Transportation - Car Rental	32	14	70%
Transportation - Cruise Tender	9	8	53%
Transportation - Public Buses	23	4	85%
Transportation - Taxis	207	63	77%
Transportation - Tour Operators	130	63	67%
Transportation - Other	11	3	79%
Watersports	344	152	69%
Travel Agency	10	3	77%
Other Activities/ Entertainment	37	14	73%
Other	48	21	70%
Vaccination Status			
Vaccinated	1450	674	62%
Not Vaccinated	604	358	68%
Unknown	17	4	81%
Employed Persons Weekly Hours			
30 hours or less	804	354	70%
Over 30 hours	292	120	71%

Characteristics of Stipend Recipients by District

DISTRICT



West Bay (1,244 persons), George Town (973 persons) and Bodden Town (648 persons) accounted for 92% (2,865 persons) of the persons who completed the survey. There were more female respondents than males in all districts. Persons in the over 55 age group represented the largest share of respondents in all districts, except North Side, where the 46-55 age group accounted for the largest share. Over 80% of respondents (2,598 persons) in Grand Cayman are willing to work in a district different from where they reside.

West Bay is the only district where the number of persons who stated that they are unemployed was higher than the number of persons currently with employment. Respondents from West Bay also had

the highest reliance on cruise tourism. This reliance on cruise tourism could be equated to the high percentage of respondents from West Bay who worked in the Watersports (278 of 1,244 persons, 22%) subsector pre-COVID-19.

49% of respondents (47 persons) from East End reported that they worked in the Accommodation sector pre-COVID-19.

The percent of persons vaccinated was lowest in Bodden Town (430 of 648 persons, 66% vaccination rate).

Table 12: Characteristics of Stipend Recipients by District (Number of Persons)

	West Bay	George Town	Bodden Town	North Side	East End	Cayman Brac	Little Cayman
Stipend Recipients	1244	973	648	100	95	36	11
Gender							
Female	660	541	352	61	66	21	7
Male	584	432	296	39	29	15	4
Age Group							
18-25	149	87	69	10	9	2	
26-35	208	165	105	18	21	4	
36-45	200	212	112	17	16	8	3
46-55	298	214	162	34	22	8	4
Over 55	388	295	200	21	27	14	4
Personal Transport							
No	338	243	105	16	21	5	2
Yes	906	730	543	84	74	31	9
Willing to Work in Another District							
No	221	167	44	14	16	18	10
Yes	1023	806	604	86	79	18	1
Status							
Unemployed	659	459	308	49	42	16	4
Employed	585	514	340	51	53	20	7

	West Bay	George Town	Bodden Town	North Side	East End	Cayman Brac	Little Cayman
Visitors Served							
Cruise	526	346	182	29	18	5	1
Stay-over	718	627	466	71	77	31	10
Pre-COVID-19 Tourism Sector							
Accommodations - Hotels	344	307	210	32	47	8	8
Accommodations - Other	71	43	46	8	4	2	
Airport Services	15	22	29	5	2	4	
Attractions	61	32	23	9	2	2	
Food Services (Restaurants, Bars, Catering)	93	87	47	10	8	2	
Retail	125	124	59	8	8	3	1
Transportation - Car Rental	16	16	10	1	2	1	
Transportation - Cruise Tender	3	13	1				
Transportation - Public Buses	8	9	8	1		1	
Transportation - Taxis	100	74	81	9	4	2	
Transportation - Tour Operators	80	67	37	4	3	2	
Transportation - Other	4	4	3	2	1		
Travel Agency	2	6	4	1			
Watersports	278	125	71	6	10	5	1
Other Activities/Entertainment	22	17	8			3	1
Other	22	27	11	4	4	1	
WORC Status							
Not Registered	858	611	444	59	64	28	7
Registered	386	362	204	41	31	8	4
Vaccinated							
No	400	283	215	24	30	10	
Yes	835	682	430	76	64	26	11
Unknown	9	8	3		1		

	West Bay	George Town	Bodden Town	North Side	East End	Cayman Brac	Little Cayman
Employed Persons Weekly Hours							
30 hours or less	414	384	252	42	43	16	7
Over 30 hours	171	130	88	9	10	4	0

DRAFT

Table 13: Characteristics of Stipend Recipients by District (Percent Share)

	West Bay	George Town	Bodden Town	North Side	East End	Cayman Brac	Little Cayman
Stipend Recipients	40%	31%	21%	3%	3%	1%	0%
Gender							
Female	53%	56%	54%	61%	69%	58%	64%
Male	47%	44%	46%	39%	31%	42%	36%
Age Group							
18-25	12%	9%	11%	10%	9%	6%	0%
26-35	17%	17%	16%	18%	22%	11%	0%
36-45	16%	22%	17%	17%	17%	22%	27%
46-55	24%	22%	25%	34%	23%	22%	36%
Over 55	31%	30%	31%	21%	28%	39%	36%
Personal Transport							
No	27%	25%	16%	16%	22%	14%	18%
Yes	73%	75%	84%	84%	78%	86%	82%
Willing to Work in Another District							
No	18%	17%	7%	14%	17%	50%	91%
Yes	82%	83%	93%	86%	83%	50%	9%
Status							
Unemployed	53%	47%	48%	49%	44%	44%	36%
Employed	47%	53%	52%	51%	56%	56%	64%

	West Bay	George Town	Bodden Town	North Side	East End	Cayman Brac	Little Cayman
Visitors Served							
Cruise	42%	36%	28%	29%	19%	14%	9%
Stay-over	58%	64%	72%	71%	81%	86%	91%
Pre-COVID-19 Tourism Sector							
Accommodations - Hotels	28%	32%	32%	32%	49%	22%	73%
Accommodations - Other	6%	4%	7%	8%	4%	6%	0%
Airport Services	1%	2%	4%	5%	2%	11%	0%
Attractions	5%	3%	4%	9%	2%	6%	0%
Food Services (Restaurants, Bars, Catering)	7%	9%	7%	10%	8%	6%	0%
Retail	10%	13%	9%	8%	8%	8%	9%
Transportation - Car Rental	1%	2%	2%	1%	2%	3%	0%
Transportation - Cruise Tender	0%	1%	0%	0%	0%	0%	0%
Transportation - Public Buses	1%	1%	1%	1%	0%	3%	0%
Transportation - Taxis	8%	8%	13%	9%	4%	6%	0%
Transportation - Tour Operators	6%	7%	6%	4%	3%	6%	0%
Transportation - Other	0%	0%	0%	2%	1%	0%	0%
Travel Agency	0%	1%	1%	1%	0%	0%	0%
Watersports	22%	13%	11%	6%	11%	14%	9%
Other Activities/ Entertainment	2%	2%	1%	0%	0%	8%	9%
Other	2%	3%	2%	4%	4%	3%	0%
WORC Status							
Not Registered	69%	63%	69%	59%	67%	78%	64%
Registered	31%	37%	31%	41%	33%	22%	36%
Vaccinated							
No	32%	29%	33%	24%	32%	28%	0%
Yes	67%	70%	66%	76%	67%	72%	100%
Unknown	1%	1%	0%	0%	1%	0%	0%

	West Bay	George Town	Bodden Town	North Side	East End	Cayman Brac	Little Cayman
Employed Persons Weekly Hours							
30 hours or less	71%	75%	74%	82%	81%	80%	100%
Over 30 hours	29%	25%	26%	18%	19%	20%	0%

DRAFT